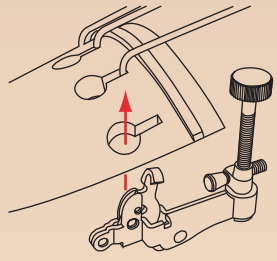
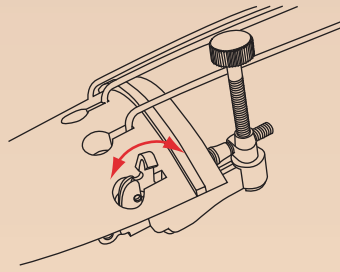


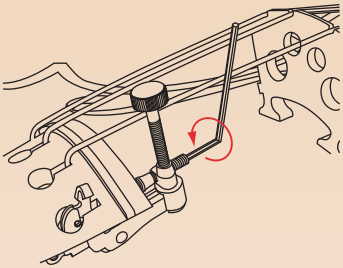
Installation



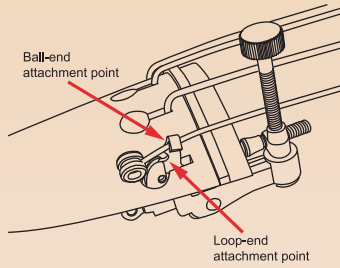
- 1 Insert the string hook section of the violin adjuster into the tailpiece hole from below.



- 2 Slide the string hook section from the tailpiece hole towards and partially into the string guide hole.



- 3 Making sure that the string hook moves smoothly, carefully turn the adjustment screw with a hex wrench, clamping the adjuster in place.

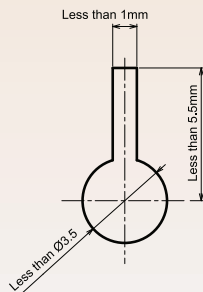
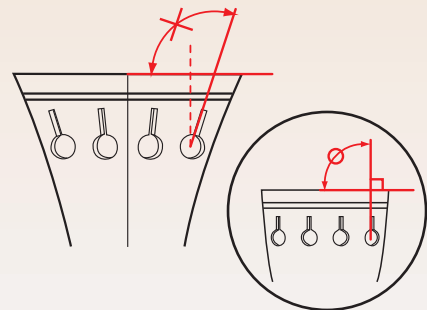


- 4 Once the violin adjuster is in place, attach the string to the string hook and tighten the string with the tuning key. After initial tuning, fine tune with the adjuster.

Note of caution

As indicated below, the violin adjuster cannot be installed in the tailpiece which has a great difference between a direction of the string guide hole and an angle of the tailpiece apical surface.

* The violin adjuster cannot be installed in the tail-piece hole less than below dimensions.



GOTOH®

GOTOH®

VIOLIN ADJUSTER

All-new violin adjuster
Compact and inconspicuous
Easy mounting

VA-01



GOTOH GUT Co., Ltd.

3040 Miyako-cho, Iseaki, Gunma, 372-0801 Japan TEL 0270-25-3608 FAX 0270-23-8432

Specifications subject to change for further quality improvement without notice.
Copyright © G-GOTOH GUT Co., Ltd. All Rights Reserved.

www.g-gotoh.com

